

ZT20J / ZT26J TELESCOPIC BOOM LIFTS

Comply with CE/ANSI/GB Standard

HIGHLIGHTS

- Better work envelop performance, 10% larger than competitor.
- Zoomlion AWM Remote Monitoring and Rental Management System.
- Smart telematic control interface with self-diagnostic monitoring capability.
- Platform dual capacity design, up to 300/454 kg.
- Smooth & stable boom extension technique controls the minimum stable extending speed at 0.015 m/s.

FEATURES

Standard Features

Horn

All motion alarm

Proportional control

Self-closing entry gate

Flashing amber beacon

GPS positioning and tracking system

Remote monitoring and rental management system

Auto-leveling system

Emergency stop button

Over tilt protection system

Emergency descent system

On-board diagnostic system

Oscillating axle

4.3' LED display

Load sensing system

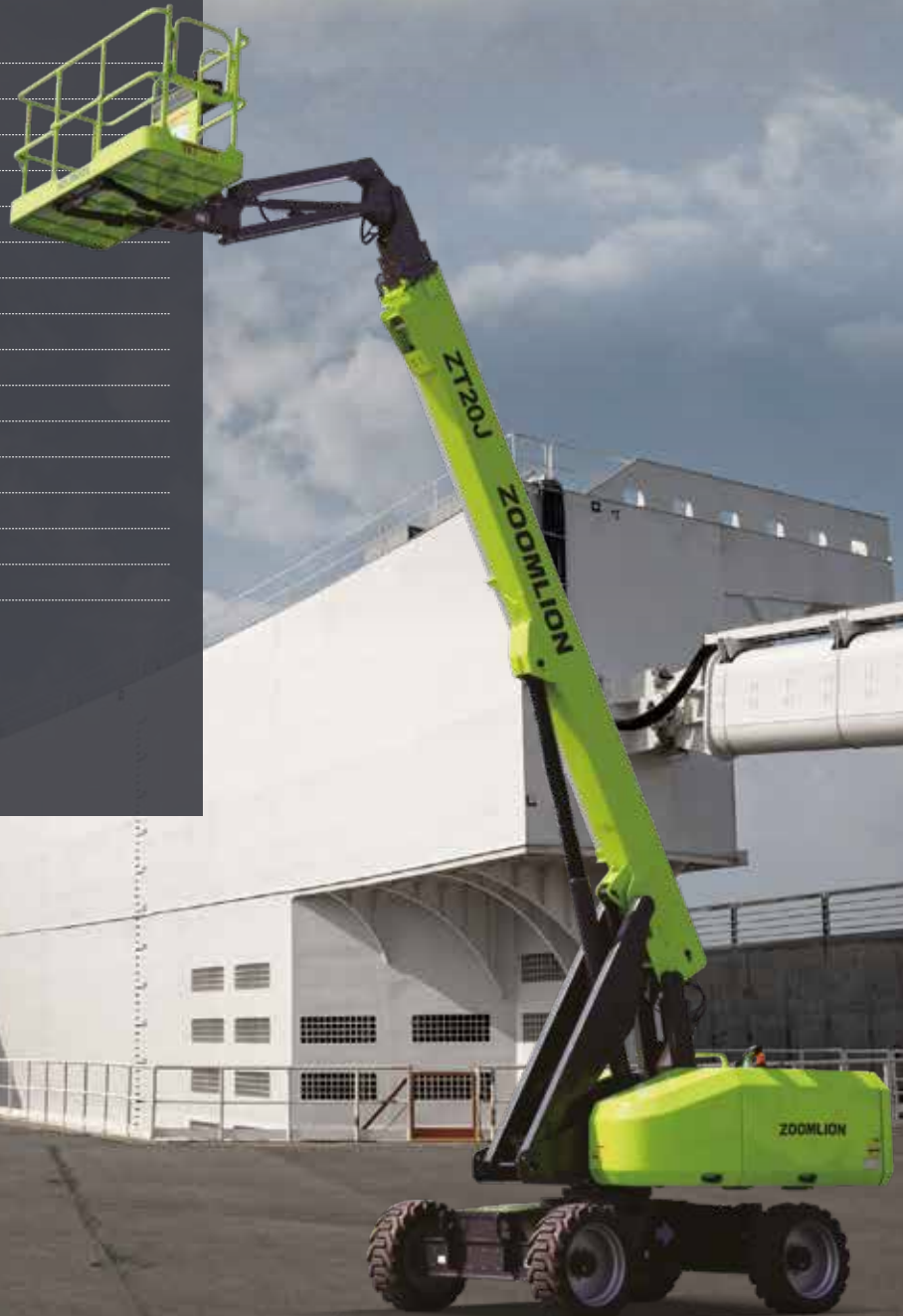
Swing-out engine tray

Accessories & Options

Platform work lights

Anti-collision device

AC power to platform



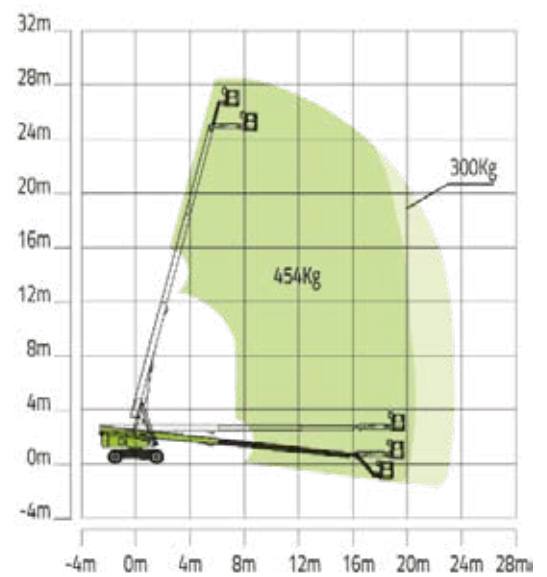
ZOOMLION

ZT20J / ZT26J - MAIN SPECS OF TELESCOPIC BOOM LIFTS

Comply with CE/ANSI/GB Standard

	Model	ZT20J	ZT26J
SIZE	Work Height	22.75m	28.20m
	Platform Height	20.75m	26.20m
	Horizontal Outreach	16.80m	22.71m
	A - Stowed Length	10.36m	12.5m
	B - Stowed Width	2.49m	2.49m
	C - Stowed Height	2.78m	2.80m
	D - Platform Length	2.44m	2.44m
	E - Platform Width	0.91m	0.91m
	F - Wheelbase	2.52m	3.05m
	Wheelbase	2.13m	2.11m
	G - Ground Clearance	0.42m	0.40m
PERFORMANCE	Platform Capacity (Unrestricted/Restricted)	300kg/454kg	300kg/454kg
	Drive Speed (Working)	6.0km/h	5.5km/h
	Gradeability	45% (24°)	45% (24°)
	Turning Radius (Inside)	2.4m	3.66m
	Turning Radius (Outside)	5.4m	6.86m
	Turntable Swing	360° continuous	360° continuous
	Platform Rotation	±90°	±90°
	Tail Swing	1.45m	1.60m
	Jib (Range of Articulation)	135° (-60°~75°)	130° (-55°~75°)
	Max. Working Slope	3°	3°
	Max. Wind Speed	12.5m/s	12.5m/s
POWER	Engine	Deutz D447 L4/Perkins 404D-22T	Deutz TD2.9 L4/Cummins QSF2.8
	Fuel Tank Capacity	130L	150L
	Control Voltage	12V DC	12V DC
	Hydraulic Tank Capacity	150L	150L
	Drive Mode	4WD	4WD
	Steering Mode	Front-wheel	Front-wheel
TIRE	Type	355/55D-625 Foam-filled Tires	15-625 Foam-filled Tires
	Weight	12200kg	18900kg

ZT26J Working Envelope



ZT20J Working Envelope

